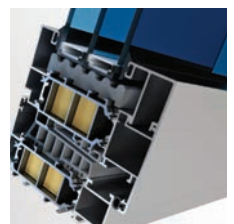
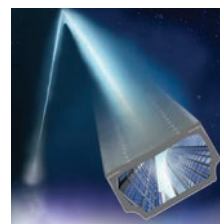




## Maximizing Performance

**For Easier Fabrication,  
Better Appearance and  
Enhanced Energy Management**



TECHNOFORM **GLASSINSULATION**



## World-Class Solutions from a World Leader



**Technoform Glass Insulation (TGI) is a world leader in the development and manufacture of high performing thermal insulation components for frames used in insulating glass.**

Working hand-in-hand with fabricators and architects around the world for the past two decades, TGI has engineered and produced more than a billion linear feet of advanced high-performance spacers.

Today, we continue to advance the industry with new technologies. TGI is proud to run some of the most efficient, state-of-the-art spacer bar extrusion lines in the world through our manufacturing facilities in Twinsburg, Ohio; Kassel, Germany and Milan, Italy.



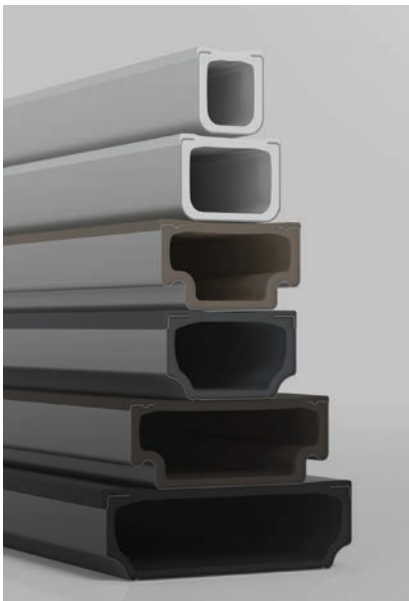
# The TGI Distinction

**We understand the needs and goals of the marketplace.**

**The desire of architects to achieve a signature look that is aesthetically pleasing and environmentally sustainable.**

**The goal of IG fabricators to achieve a trouble-free and efficient production process.**

**And the need of facility owners to achieve energy efficiencies with IG units that meet all relevant quality and safety standards.**



## WHAT IS HIGH-PERFORMANCE, WARM-EDGE TECHNOLOGY?

Generally speaking, “warm edge” is a type of insulating glass construction using an air spacer offering lower thermal conductance than traditional aluminum spacers. Warm-edge IG units typically offer higher resistance to condensation and incremental improvement in window efficiency.

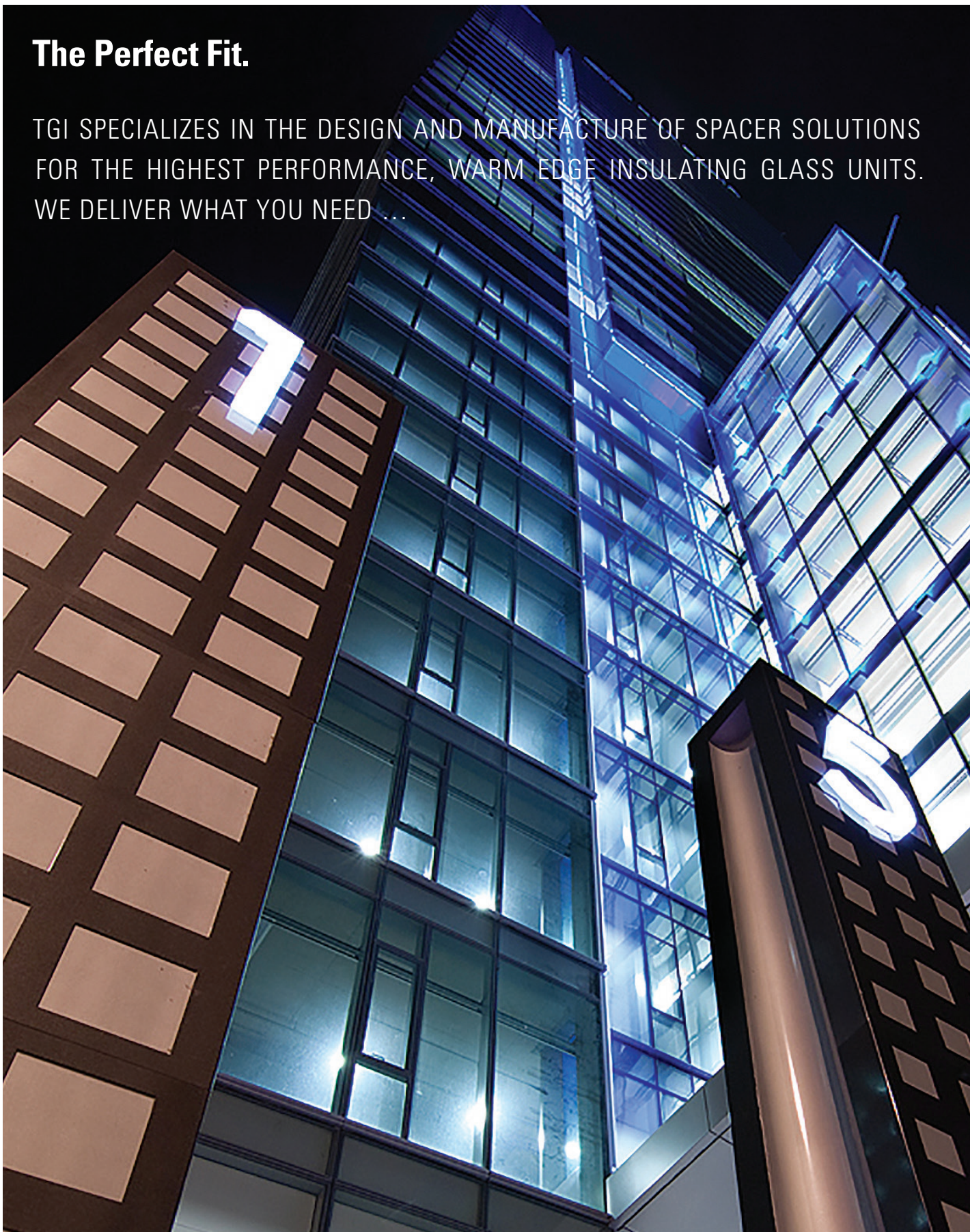
But not all warm edge spacers are alike. By using high performing polymers in conjunction with thin stainless steel, TGI spacers achieve optimal thermal performance, sealant adhesion, and gas retention while still being aesthetically pleasing.

**TGI-Spacer technology reduces the energy needed to maintain the desired indoor temperature while reducing the risk of condensation.**



## **The Perfect Fit.**

TGI SPECIALIZES IN THE DESIGN AND MANUFACTURE OF SPACER SOLUTIONS FOR THE HIGHEST PERFORMANCE, WARM EDGE INSULATING GLASS UNITS. WE DELIVER WHAT YOU NEED ...







## AND MORE:

### More Experience

During the past two decades, TGI has produced more than 1 billion linear feet of high-performance, warm-edge spacers for insulating glass units worldwide.

### More Value

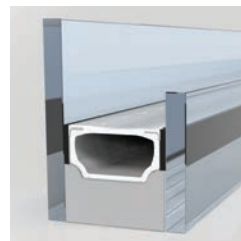
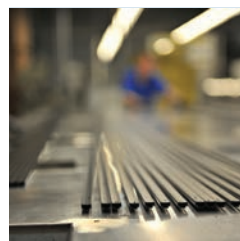
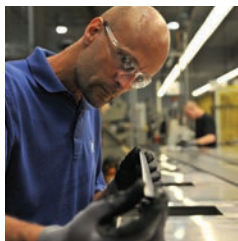
TGI spacer solutions meet the design and performance needs of insulating glass and window manufacturers. They also meet the aesthetic and energy goals of architects and designers. TGI-Spacer solutions are readily available, easy-to work with, drop-in systems that require no special equipment or training. Best of all, our spacer solutions deliver enhanced thermal performance, cleaner sightlines and the required design and material technologies to meet the highest quality and safety standards.

### More Features

TGI spacer solutions are available in a wide range of sizes and colors. Custom colors and sizes are available upon request. Our exceptional sightlines complement the full range of commercial, industrial, and residential window units.

### More Benefits

TGI spacer solutions ensure indoor comfort regardless of outdoor conditions – cool in the summer and warm in the winter. TGI-spacers also reduce the risk of condensation, reduce energy loss, increase comfort, improve overall performance, and increase the life of commercial and residential window units.



## Exceptional Product Offering

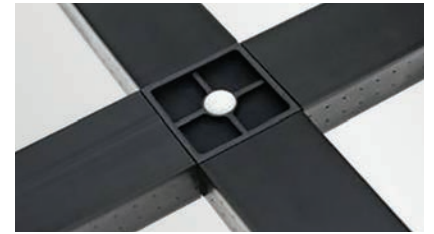
ALL TGI PRODUCTS ARE AVAILABLE IN A WIDE RANGE OF STANDARD SIZES AND COLORS, AS WELL AS CUSTOMIZED SOLUTIONS.

### TGI®-Spacer

TGI-Spacer is a unique hybrid spacer system incorporating a high-performance polymer and low conductivity stainless steel to provide minimal heat transfer and maximum protection against gas leakage and moisture penetration.

### TGI®-Muntin

TGI-Muntin is a high performing glazing bar that can be positioned within an insulating glass unit without any direct contact with the glass. The TGI-Muntin is a decorative feature that gives windows a traditional look.



## Quality Features

### World-class thermal capabilities:

TGI-Spacer Solutions deliver superior sightline temperatures, condensation resistance and U-Factors that enhance the overall fenestration system, which helps meet or exceed current and future energy codes.

### Structural rigidity:

TGI-Spacer compression strength withstands demanding commercial glazing pressure requirements, provides exceptional unit durability and allows easy handling of large IG units.

### Exceptional long-term durability:

TGI-Spacer Solutions meet or exceed the toughest industry standards for long-term unit durability, UV resistance, gas retention, fogging, volatiles and moisture penetration.

## Exceeding Standards

WHETHER IT IS DURABILITY OR PERFORMANCE, OUR SPACERS MEET AND EXCEED THE STANDARDS WHEN PUT TO A VARIETY OF NATIONAL AND INTERNATIONAL TESTS.

### **Aesthetically pleasing sightlines and colors:**

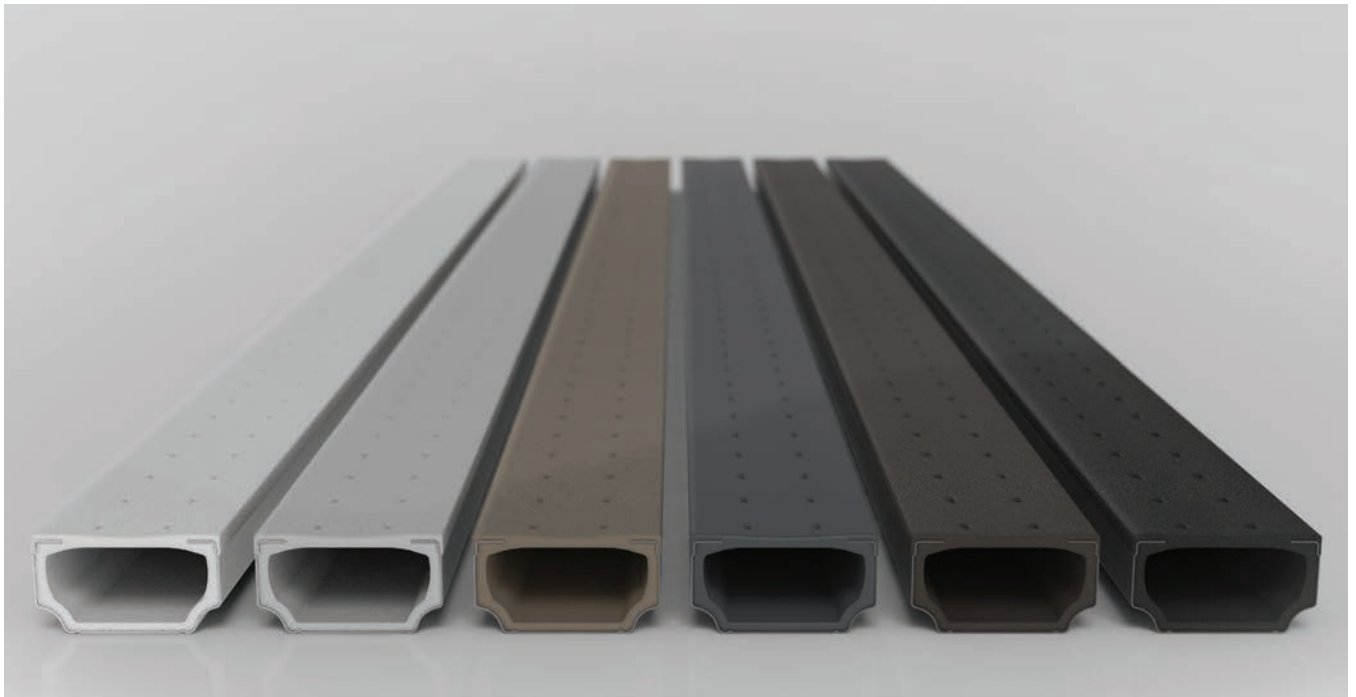
Blending naturally with any window frame, TGI-Spacer solutions present straight sightlines and a smooth matte finish that complements every architectural design.

### **True dual seal IG unit construction:**

Through the use of a low conductivity stainless steel, TGI-Spacer Solutions allow for true dual seal IGU construction. A primary sealant can be placed along the entire perimeter of the spacer frame – including corners – to provide an unbroken moisture vapor barrier.

### **Exceptional condensation resistance:**

TGI -Spacer solutions improve condensation resistance to enable windows and curtain walls to attain the highest thermal performance.





## A global presence ...



**Begin using TGI-Spacer solutions today.  
Call or visit our website.**

**TECHNOFORMGLASSINSULATION**

1755 Enterprise Parkway  
Twinsburg, OH 44087  
(330) 487-6600  
[www.glassinsulation.us](http://www.glassinsulation.us)



MEMBER OF

